



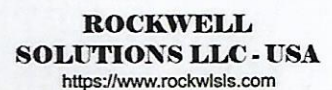
Sharing Technologies From Around The Globe

# ATAMAP ASSOCIATES INT'L LTD

SECURITY EQUIPMENT, PROTECTION & SAFETY PRODUCTS

EXCLUSIVE AUTHORIZED DISTRIBUTOR TO:

World Leader Specialist Manufacturers of  
Security Equipment, Protection & Safety Products



# About ATAMAP

ATAMAP Associates Limited was established in 2002 with a network of offices on four continents.

We bring technologies from around the globe to the end user through our established distributor network.

We also provide bespoke distribution solutions in both the public and private sectors. With clients ranging from within the government sector to blue chip organizations and the SME marketplace, we are committed to delivering efficient solutions for varying needs.

At ATAMAP ASSOCIATES, we proudly offer a variety of counter-surveillance products to precisely meet your demand, ranging from Wireless/Wired Security Equipment, Anti-Mine Equipment, Body Armour, Protection Equipment, Safety product, Bug Detector, EMF detector, Biometrics Equipment, Spy Equipment, CCTV Cameras & Access Control Equipment, Thermal Imaging System, Complete Discrete Decryption/Encryption Solutions to highly sophisticated Bomb Detector / Bomb Jammer.

## **COURSES**

- Executive & Close Protection
- High-Risk Protective Security (PSD)
- Counter Surveillance & Intelligence
- Maritime Security & Anti Piracy
- Counter Terrorism (CT)
- Advanced Tactical Weapons
- Forensics
- Intelligence Gathering & Techniques

## **Some of the areas where our partners have been operating in:**

- Scandinavia
- Germany
- UK
- Balkans
- Iraq
- Afghanistan
- Lebanon
- Uganda

## **Personal Security Details (PSD)/Close protection**



Our international PSD/Close Protection services include both low risk and high risk protection teams for all situations. Our personal security detail team is the first line in a proactive defence to ensure that a threat never reach you.

## **Static security**



We take care of the protection of your assets, the securing of your buildings, harbours, oil derricks, pipelines and construction sites world wide.

## **Maritime Security**



Our PMSC teams are highly professional, selected from former Scandinavian and UK military special forces and marine/amphibious forces. We work exclusively according to the IMO guide lines.

## **Security consultants**



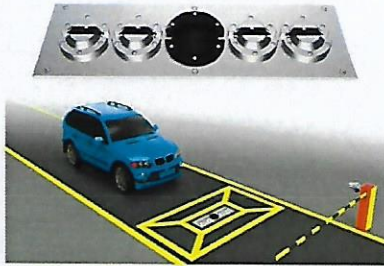
Our consultants/advisors are highly professional, selected from special forces and law enforcement from SCANDINAVIA, UK, FRANCE, CANADA & USA. Our consultants will help you implement the necessary security framework, including management and operational areas.

This product and client portfolio will assist you in choosing the most suitable products for your applications.

# VEHICLE SCANNER – UVSS

The Under Vehicle Surveillance System mainly used for checking whole structure under cars, Can quickly and accurately identify the hiding contraband in the vehicle and illegal immigration, smuggling people, faster and more accurate than traditional vehicle inspection mirror, greatly improving the speed and accuracy of vehicle safety checks, reducing investment in human resources.

## Fixed Mode:



## Deployable Mode:



# T-BAR TROLLEY TYPE UNDER-VEHICLE SEARCH MIRROR

The T-Bar Trolley Search Mirror is a robust 'wheeled trolley' under vehicle illuminated search mirror, specifically designed and developed with security personnel in mind for detailed searching of the underside of vehicles.

# EOD/IEDD MEGA JAMMER

The GSS-EOD/IEDD MEGA JAMMER is one of the best countermeasure jammers available on the market today. The barrage jamming is produced by a fast randomly CW (Continuous Wave) proprietary ladder waveform that slews or "sweeps" the frequency of the jammer from its lowest to its highest frequency limits. Superimposed along the rising ramp portion of the waveform are many randomly distributed horizontal steps.



# BOMB CONTAINER



# SPIDER WATCH

Guarding a border from Intruders



# PROTECTIVE MASK M2F



# HIGH POWER BACKPACK BOMB JAMMER

This High Power Backpack easily transportable Bomb Jammer uses the latest advanced Direct Digital Synthesizer technology that can quickly & efficiently block signals coming even from the most sophisticated RCEDD - Remote Controlled Digital or Analog Explosive Detonating Devices. Custom frequencies can be easily preprogrammed by using our proprietary software via regular Laptop or PC.



# EXPLOSIVE AGENTS DETECTOR/SNIFFER

Advanced Portable System for detection of explosives and radioactivity

## MINI-EXPLONIX



## EXPLONIX



## LONG RANGE EXPLOSIVE DETECTOR (300m) G-TRACER LOCATOR



## SAS CEK-R Video Inspection Kit



# ELECTRO-HYDRAULIC RISING BOLLARD-



## INTRODUCTION

The bollard employs an effective electro-hydraulic mechanism ensuring smooth and efficient movement of the bollard. There is the additional benefit of our manual override facility, ensuring the bollard remains operational in the event of an emergency or power failure. The electronic control unit allows the systems to be operated in either automatic or semi-automatic mode, they can easily be integrated with access control and safety equipment, traffic lights, photocells and ground loops. There is an additional optional feature which allows the bollard to be automatically lowered in the event of a power failure.

## MANUAL BARRIER CONTROL

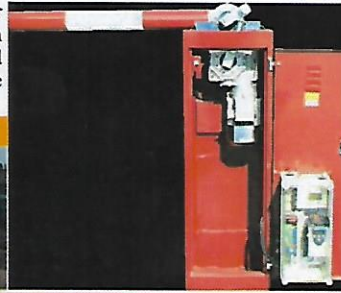


# AUTOMATIC BARRIER CONTROL



## (SPECIFICATION )

- Heavy duty pillar block bearings
- Removable fibreglass hood (Non rusting)
- Safety door switch (isolates power for protection)
- 3 Phase motor, single phase supply (guaranteed reliability)
- Door mounted control panel (for ease of access and adjustment)
- Inverter driven (smooth operation)
- Adjustable speed, acceleration and deceleration
- No springs required (no balancing or adjustment necessary)
- Motor & gearbox direct drive (no pulleys or belts required)
- Pre-wired loop detector bases for single Channel safety and entry/exit control
- Heavy duty roller plunger limit switches
- Programmable logic control (c/w fault diagnostic on screen display)
- Manual override (in case of power failure)
- Comes complete with M12 anchor shield bolts (no cabinet mounting plate required)
- 1.5 Amp power supply (for additional access control)
- Added Benefits:
- Corporate colours available on request
- Low maintenance
- Ease of installation



# CCT CAMERAS



# SECURITY SCREENING SYSTEMS

## HAND-HELD WHOLE BODY IMAGER (GAME CHANGE)

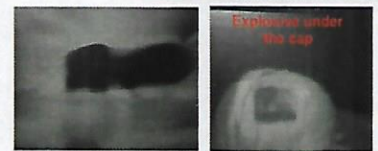
The 2010 Thermo Conductive Infra-Red state-of-the-art hand held whole body Imager is capable of detecting a wide range of objects such as plastics, ceramics, metals, liquids etc. concealed under the clothing on human body.

It is the only Hand Held Whole Body Imager that does not emit any radiation, and does not violate the person's privacy.

This is critical in all types of venues from airports, banks and retail establishments, from commercial high rises to transportation services and detention centers. It can be applied quickly & efficiently where the security is desired and necessary.

### APPLICATIONS:

- Airport checkpoints
- Customs, Borders Crossings
- Prisons
- Courtrooms
- Loss Prevention Industry
- Government buildings
- Commercial buildings
- VIP Places



# ACCESS CONTROL



# WALK THROUGH DETECTOR

## UNIQUE MULTI-ZONE TECHNOLOGY

Uses unique coil system that guarantees uniform first-rate detection performance throughout the frame opening. This multi-zone technology provides excellent discrimination and a much lower false alarm rate than with conventional detectors. This result in a much higher throughput rate.

Static Type      PORTABLE (Deployable Type)



# HAND HELD NON LINEAR JUNCTION DETECTOR

This advanced unique non-linear junction detector is significant for its small & compact size, ergonomic design and light weight. The dimensions are as small as 39x10x4 cm; the weight is less than 700 g. Because of its advanced antenna design (only 18 mm thick) it can be used for the hard-to-search small and tight places which was never before possible with the existing NLJ detectors presently available on the market.

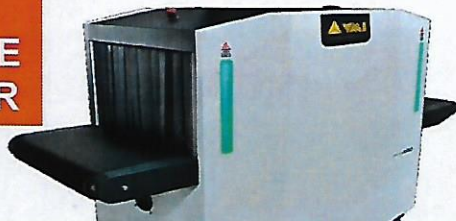


# Parcel X-Ray Scanner

A large capacity cabinet postal x-ray scanner for checking bundles of letters, courier deliveries, york trays, parcels and handbags. It is a freestanding unit combining a large screening chamber with a compact physical size. Imaging is in black and white and color with several image enhancement options for highlighting low, medium and high density materials. Image enhancements are made using a simple handheld mouse. The images are then stored on screen until the next x-ray exposure is made.



# VMI LUGGAGE SCANNER



## Mailguard



## Letterbomb Detector & Mail Scanner



# THE BODYARMOUR OF THE FUTURE TODAY

Protection level: Swedish police standard (RPS 2) (9mm, 357 magnum) Vo bullet 450 m/s

Protection level: Swedish police standard (RPS 2) (9mm, 357 magnum) Vo bullet 450 m/s

Military vest 3A with quick release system

Military vest 3A, SB51

Bomb Suit



Inside material: Outlast, Termo regulated, space technology. (Made in Sweden / UK)



Riot Gear



Armour Plates DTS "insert plate" NIJ III ++

## HELMET

The Helmet will protect the wearer's head from blunt, sharp, and ballistic threats. It can be used in conventional warfare, counter-insurgency, and public order operations



## HANDHELD METAL DETECTOR (Wand)



## MILITARY SEARCH LIGHT



## SLIDE GLOCK GUN



## HANDCUFF

Metropolitan Police Type



## LIMB RESTRAINTS



## LAW ENFORCEMENT

INDIVIDUAL USE / DISPENSERS

### INDIVIDUAL TEAR GAS SPRAY

#### USE

Given their specific range of application, these single stream aerosol sprays are intended for use by police and security forces to neutralize isolated individuals by instantaneously incapacitating them. Lift up the safety catch, apply pressure with your thumb on the plunger and a thread-like liquid stream is ejected through the streamlined nozzle.

#### CHARACTERISTICS

Capacity of active composition	30 cc
Total height	30 cc
Diameter	120 mm
Total weight	35 mm
Range	52 g
% of 21°C	4 m
Duration of continuous flow	5%
Temperature range	6 sec.
	-10/+50°C



Made in FRANCE

#### PERFORMANCE

The thread-like stream of these aerosols easily hits a target at a distance of 4 meters. The precision of the spray combined with the concentrated CS solution rapidly neutralize exposed individuals without causing irreversible effects. Indeed, this solution was chosen for its harmless effect to skin, mucous membranes and especially to eyes.

#### TRANSPORT

UN : 1950  
Hazard class : 2.1  
Registration number : 2  
Export authorization : licence 02

## BODY GUARD SECRET COMMUNICATION SYSTEM

Do not let the small size of this Radio deceive you, it is definitely the jewel of the two way radios that way outperforms anything else that is available on the market. It is used mainly where long range discrete communication is needed between government security personnel. It comes complete with clear in-ear loop and complete PTT assembly to be used for secret communications.



## NIGHT VISION GOGGLE



## TOUCH DOWN



## MULTI PURPOSE PARTICULATE RESPIRATOR

### READI MASK

Readi Mask is a multi-purpose particulate respirator that helps protect against airborne particles including:

- Viruses
- Bacteria
- Smoke Particles
- Radioactive Particle Matter
- Airborne Allergens

### READI MASK MULTI-USE

#### Who Uses Readi Mask

- > First Responders
- > Police
- > Prisons
- > EMS
- > Factory
- > Construction
- > Industrial
- > Schools

#### Where Readi Mask Is Used

- > Home
- > Office Buildings
- > Hotels - Casinos
- > Airplanes
- > Bank Bulk Room
- > Trains
- > Auto
- > Factories

## SMOKE HOOD

Twin cartridges for easy breathing  
Maintenance-free  
High visibility reflective strips for easy recognition  
For easy access - head harness adjusts outside the hood  
Protects lungs, head, eyes, and face  
One universal size  
Quick and easy donning  
Unobstructed field of view  
Can be used with eyeglasses, beards, and long hair  
Packaged in puncture-and- water-proof laminate barrier



## ATAMAP ASSOCIATES REFERENCES:



**U.S Commercial Service**  
**Embassy of United States of America, Lagos Nigeria**



**Nigerian-American Chamber of Commerce**



**UNITED STATES DEPARTMENT OF COMMERCE**  
**BUREAU OF INDUSTRY AND SECURITY**  
**WASHINGTON, D.C. 20230**

EXPORT LICENSE for **ATAMAP ASSOCIATES > D485670**

**ATAMAP ASSOCIATES INT'L LTD** 

Security Equipment, Protection & Safety Products

### NIGERIA OFFICES:

\*36 Julius Nyerere Crescent, by ECOWAS Headquarters, Asokoro, Abuja  
\*Suite 29, Garki 2 Shopping Center, Plot 1264, Mohammadu Buhari Way, Garki 2, Abuja

\*81, Obafemi Awolowo Way, Ikeja, Lagos

Tel: 09 2912610, 08189300055 D/L: 08151566500

E-mail: [atamap@email.com](mailto:atamap@email.com)

[www.atamapassociates.com](http://www.atamapassociates.com)